



YAMAHA Grizzly 700 INSTALLATION INSTRUCTIONS

PLEASE READ INSTRUCTIONS BEFORE ATTEMPTING INSTALLATION

Hardware kit

- 2 Complete Silencers
- 1 Left 2 pc exhaust pipe
- 1 Right 2 pc exhaust pipe
- 1 8x20 bolt
- 2 8mm flat washers
- 2 8mm lock washers
- 1 silencer mounting assembly
- 1 heat shield
- 2 heat shield mounting hardware
- 1 install instructions

REMOVAL:

Remove seat. Remove left side panel by removing 2 push pins, one by the gas tank under the seat, and one by the instrument panel. Remove one 6mm bolt in the front fender well. Remove the rear rack, 4 8mm bolts. Remove the rear fender assembly, remove the hardware connecting it to the foot wells, 2 /6mm bolts under the seat, and 2/ 6mm bolts all the way to the rear of the plastic. Remove the stock exhaust, the silencer first and then the head pipe.

INSTALL:

Install the right head pipe into the right port when sitting on the atv (loose), install the left head pipe over the right one (loose). Install the mid pipes onto the head pipes from the rear of the atv. Secure the mid pipes together with the supplied ¼-20 x ½” button head allen (do not tighten). Slide the silencers onto the mid pipes from the rear and secure to the stock frame mount with the supplied 8x20mm bolt, flat washer, and lock washer (do not tighten). For the rear mount use the supplied hardware as seen in picture # 1 . Start from the header flanges and tighten all hardware back to the silencers. Tighten to manufacturers specs. Install the supplied heat shield with the clamp and standoff hardware to the mid pipes as shown in picture # 2 .

F1 note: Torque spec for header flanges 10ft pounds. Improper tighten of header flanges will not be covered under WARRANTY.

JETTING: The EFI fuel controller provided is for a stock motor with a Looney Tuned Exhaust System at sea level. Other performance modifications to your bike usually requires changes in fuel. Final jetting is the customer’s responsibility.

WARNING!

LOONEY TUNED EXHAUST DOES NOT TAKE RESPONSIBILITY FOR DAMAGE THAT MAY OCCUR DURING OPERATION OF YOUR VEHICLE UNDER IMPROPER JET SETTINGS. IT IS THE FINAL RESPONSIBILITY OF THE OWNER/RIDER TO ADJUST JETTING TO SPECIFIC RIDING CONDITIONS AND ELEVATION BEFORE RIDING.

QUIET CORES:

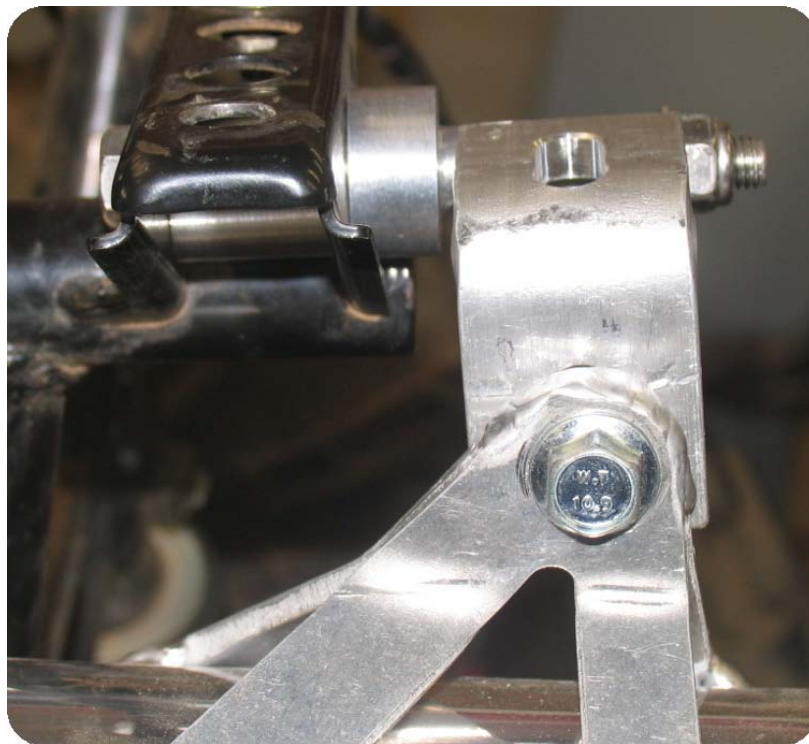
Quiet cores are an option with this kit. To install the quiet cores remove the rear end caps (turn down) and install the quiet cores with the tubes facing inward. Re-install the end caps.

Silencer Packing

We recommend checking you're packing every 15 to 20 hours of riding. As your decibel level will increase and without the packing will damage the internals of your silencers. No Warranty will be given for failure from lack of maintaining.

FIRST RIDE: Before taking your Rhino for the first ride make sure **NO WIRES ARE TOUCHING THE EXHAUST**. Your first ride with Rhino after installing your new exhaust system should only be 15-20 minutes. Then, let your system cool and re-tighten all of the hardware.

Picture #1



picture #2



Recommended 2/ 2.00 holes in the air box lid for best performance.



Optional super trapp disc setup



IMPORTANT MESSAGE—PLEASE READ AND UNDERSTAND!
WARRANTY LIMITATIONS

Looney Tuned Exhaust (LTE) warrants only to the original purchaser the equipment purchased is free from defects in material and workmanship under normal use and service. Components of the equipment are supplied to LTE by others and LTE warrants such components to the purchaser only to the extent that such components are warranted to LTE by the supplier. LTE's obligation under this warranty shall be limited to the repair or exchange of any part or parts which may thus prove defective under normal use and service within one year from date of invoice and which LTE examination shall disclose to LTE's satisfaction to be thus defective. This warranty is expressly in lieu of all other warranties expressed or implied and of all other obligations or liabilities on our part and LE neither assumes, nor authorizes any other person to assume for LTE any other liability in connection with the sale of this equipment or any part thereof which has been subject to accident, negligence alteration, abuse or misuse. LTE makes no warranty what so ever in respect to accessories or parts not supplied by LTE. The term "original purchase", as used in this warranty, shall be deemed to mean that person for whom the equipment is originally invoiced. This warrant shall apply only within the boundaries of the continental United States.

The remedy defined in this statement shall be the Purchaser's exclusive remedy against Looney Tuned Exhaust (LTE).

In no case shall Looney Tuned Exhaust (LTE) be liable hereunder for any consequential Damages.

THERE ARE NO WARRANTIES, EXPRESS OR IMPLIED, INCLUDING ANY WARRANTY OF MERCHANTABILITY, WHICH EXTEND BEYOND THE FACE OF THIS STATEMENT.

Please be sure that no hoses or wiring will vibrate or lay against the exhaust before you take off for your first ride!!!!

AND

Don't forget to check your silencer packing!!!!!!!