



POLARIS PREDATOR 500 INSTALLATION INSTRUCTIONS

PLEASE READ INSTRUCTIONS BEFORE ATTEMPTING INSTALLATION

Remove complete stock air box and snorkel to carburetor. Remove both side covers and remove complete stock exhaust system.

JETTING

Now would be a good time to jet your carburetor. Turn fuel petcock off, and remove your fuel line. Loosen clamp on motor side of carburetor and remove carburetor. Remove float bowl and replace your stock 150 main jet with the supplied 170 main jet. Replace the float bowl, change needle to the 4th clip and remount the carburetor to the manifold.

For "06" and Newer ATV's

We have supplied you with a 90 degree fitting with your kit. This replaces the stock crank case vent that is pressed into the case. With a pair of pliers remove the old fitting from the case and lightly tap in the new one with the angel pointed towards the carburetor. Slide the vent hose onto the fitting with the crank case vent attached to the other end, then zip tie the hose to the frame.

INSTALLING SYSTEM

Remove positive cable from starter, cut zip tie attaching cable to frame and reroute cable on the outside of frame above ignition box and re-attach cable to starter. Remove both ground cables from frame and route on the outside of frame, then re-attach with the supplied 1/4 - 20 x 3/4 bolt, nut and washer. Then zip tie to frame to secure. Secure 1/2" oil line to the clutch cable bracket.

Install the right side pipe through the frame first (DO NOT ATTACH YET). Route the left pipe through the frame and let it rest on the motor. Attach the right side pipe to the left port leaving the bolts loose. Attach the left pipe to the right port. At the same time place the pipe bracket on the inside of the right pipe bracket and loosely attach to cylinder (See pic. #1).

Remove the upper rear frame bolt and mount right side pipe at this location (See pic #2). Be sure all hoses and wires will not fall onto the exhaust. The pipe "WILL" get "HOT" and "WILL" melt.

Remove plastic holder retaining taillight electrical and zip tie to the left side frame rail being certain no wires touch the exhaust.

Remove the two rear most bolts securing the rear bumper. Spray W-D 40 or similar lubricant onto the ends of the exhaust and slide silencers onto tail pipes and secure with the supplied 5/16 bolts, flats and locks to the bumper mounting holes.

Remove taillight from frame and relocate to the plastic by drilling new hole and using your original hardware (See pic #3).

FINISHING UP

Place your right side panel on and mark the panel where it touched the pipe. Trim the side so it has about a 1/4" gap from the pipe and remount. Make sure that everything is nice and tight and no wires are touching the exhaust system.

FIRST RIDE

Your first ride should be for 20 to 30 minutes, then turn off bike to let cool. Re torque all pipe hardware from the cylinders to the silencers.

QUIET CORES

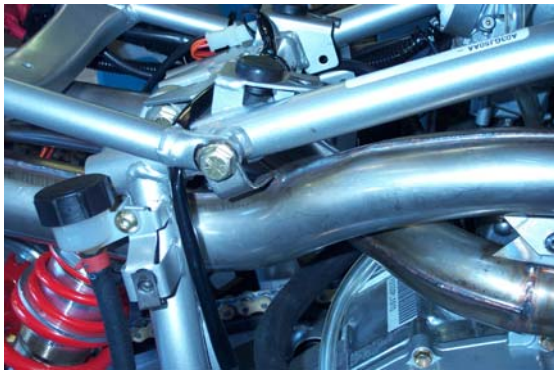
Quiet cores are supplied with this kit but not installed. To install the quiet cores remove both rear end caps ((turn downs) and install the quiet cores with the tubes facing inward. Re-install the end caps.

Silencer Packing

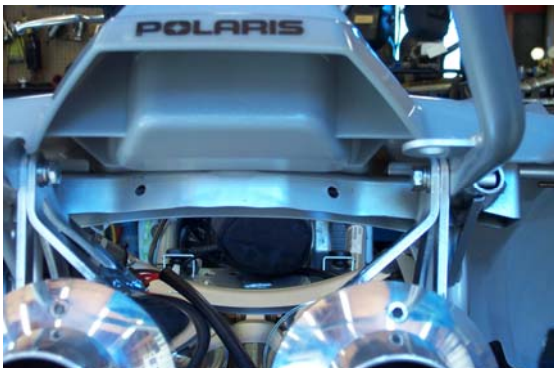
We recommend checking you're packing every 15 to 20 hours of riding. As your decibel level will increase and without the packing will damage the internals of your silencers. No Warranty will be given for failure from lack of maintaining.



Pic#1



Pic#2



Pic#3

IMPORTANT MESSAGE—PLEASE READ AND UNDERSTAND!
WARRANTY LIMITATIONS

Looney Tuned Exhaust (LTE) warrants only to the original purchaser the equipment purchased is free from defects in material and workmanship under normal use and service. Components of the equipment are supplied to LTE by others and LTE warrants such components to the purchaser only to the extent that such components are warranted to LTE by the supplier. LTE's obligation under this warranty shall be limited to the repair or exchange of any part or parts which may thus prove defective under normal use and service within one year from date of invoice and which LTE examination shall disclose to LTE's satisfaction to be thus defective. This warranty is expressly in lieu of all other warranties expressed or implied and of all other obligations or liabilities on our part and LE neither assumes, nor authorizes any other person to assume for LTE any other liability in connection with the sale of this equipment or any part thereof which has been subject to accident, negligence, alteration, abuse or misuse. LTE makes no warranty whatsoever in respect to accessories or parts not supplied by LTE. The term "original purchase", as used in this warranty, shall be deemed to mean that person for whom the equipment is originally invoiced. This warranty shall apply only within the boundaries of the continental United States.

The remedy defined in this statement shall be the Purchaser's exclusive remedy against Looney Tuned Exhaust (LTE).

In no case shall Looney Tuned Exhaust (LTE) be liable hereunder for any consequential damages.

THERE ARE NO WARRANTIES, EXPRESS OR IMPLIED, INCLUDING ANY WARRANTY OF MERCHANTABILITY, WHICH EXTEND BEYOND THE FACE OF THIS STATEMENT.

**Please be sure that no hoses or
wiring will vibrate or lay
against the exhaust before you
take off for your first ride!!!!**

AND

**Don't forget to check your
silencer packing!!!!!!!**